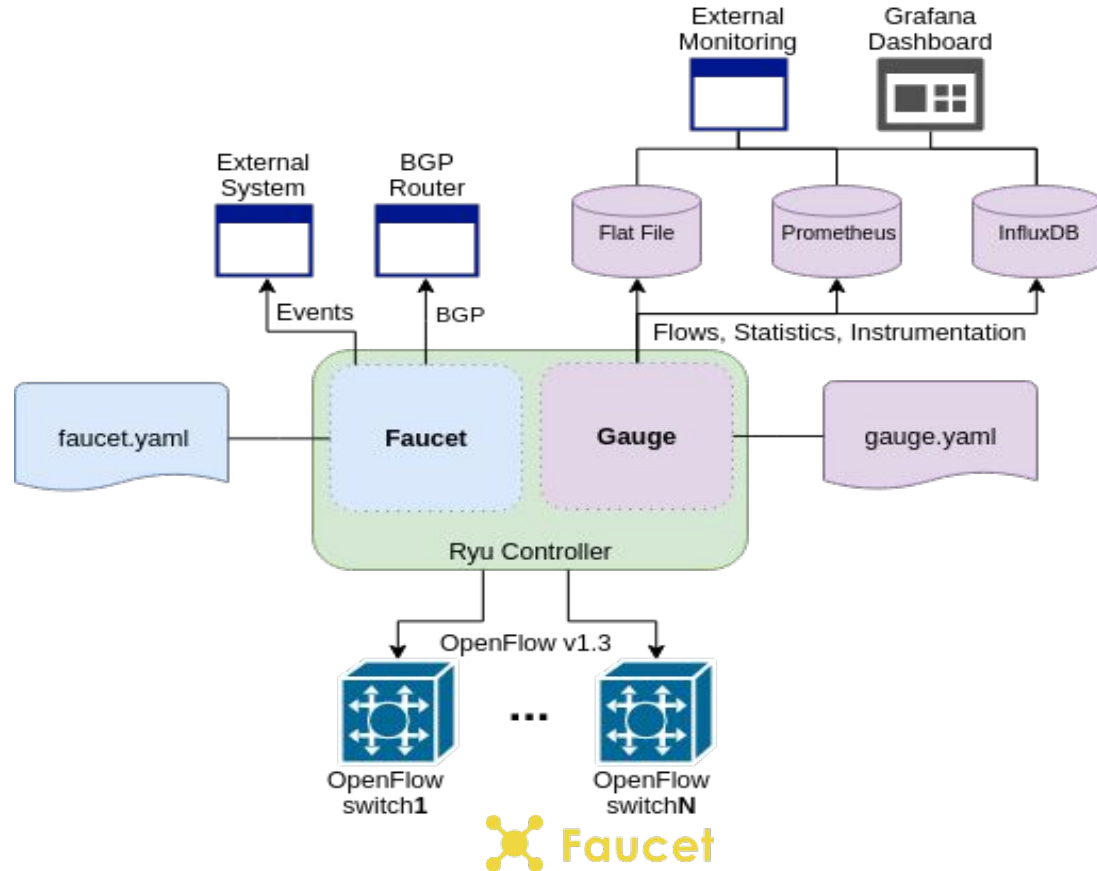


Faucet : Openflow SDN Made Easy

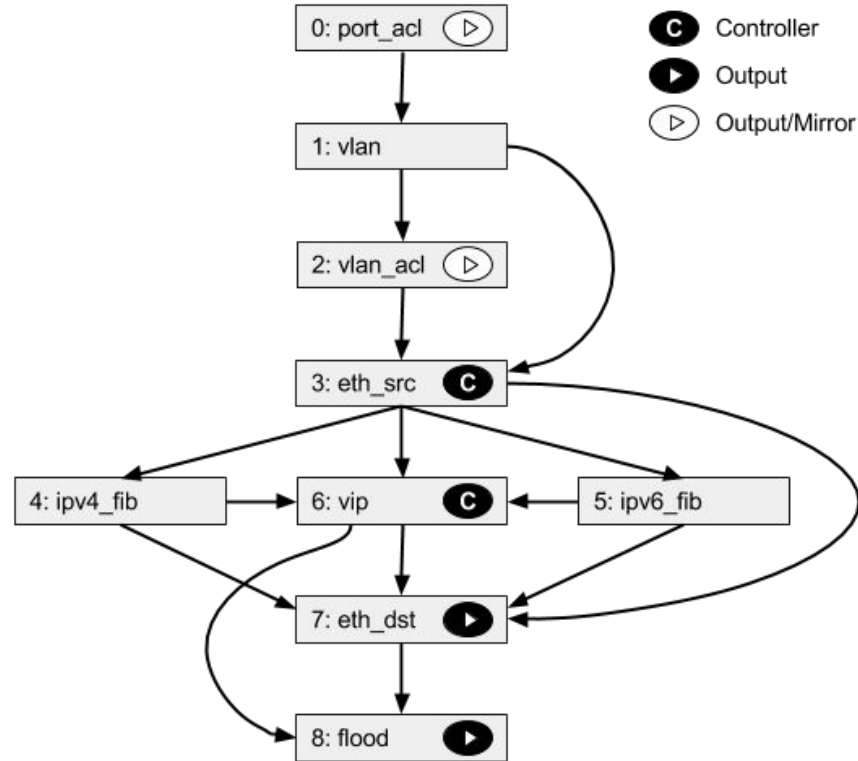
Richard Nelson
RIPE78



Faucet is an Enterprise SDN Controller



Faucet Pipeline



Integration Test Suite

- Boot up many different network scenarios in parallel
 - 30 - 60 minutes to complete
 - More code than the controller
- Ensure features work and checks performance
- Open vSwitch reference
- Real hardware
 - Lets us prequalify devices for FAUCET support
 - Cyber RFP

Switch Support



As simple as possible (but no simpler)

- Easy to Install
 - pip, apt, docker etc
- Easy to Configure
 - YAML
- Easy to Automate
 - Test, deploy on green
- Easy to Upgrade
 - Weekly releases
- Well Documented
 - <https://docs.faucet.nz>



Network visibility

- Gauge fetches metrics from OpenFlow v1.3 dataplanes
 - MAC learning information
 - Port state
 - Port counters (bytes in/out, packets in/out, errors)

- Faucet controller also exports metrics
 - Learning capacity
 - CPU/Memory usage
 - Inventory



Policy and Security

DAQ - Google

- Flexible IoT Device Automated Qualification (DAQ) framework
- Extends Faucet test framework to test IoT device behaviour

Poseidon - Cyber Reboot

- Machine learning classification of node behaviour
- Uses Faucet events and traffic samples

Nozzle - UNSW

- AI inference engine(s) identify attacks
- Uses Faucet to block attacks



Deployments



2017, 18, 19



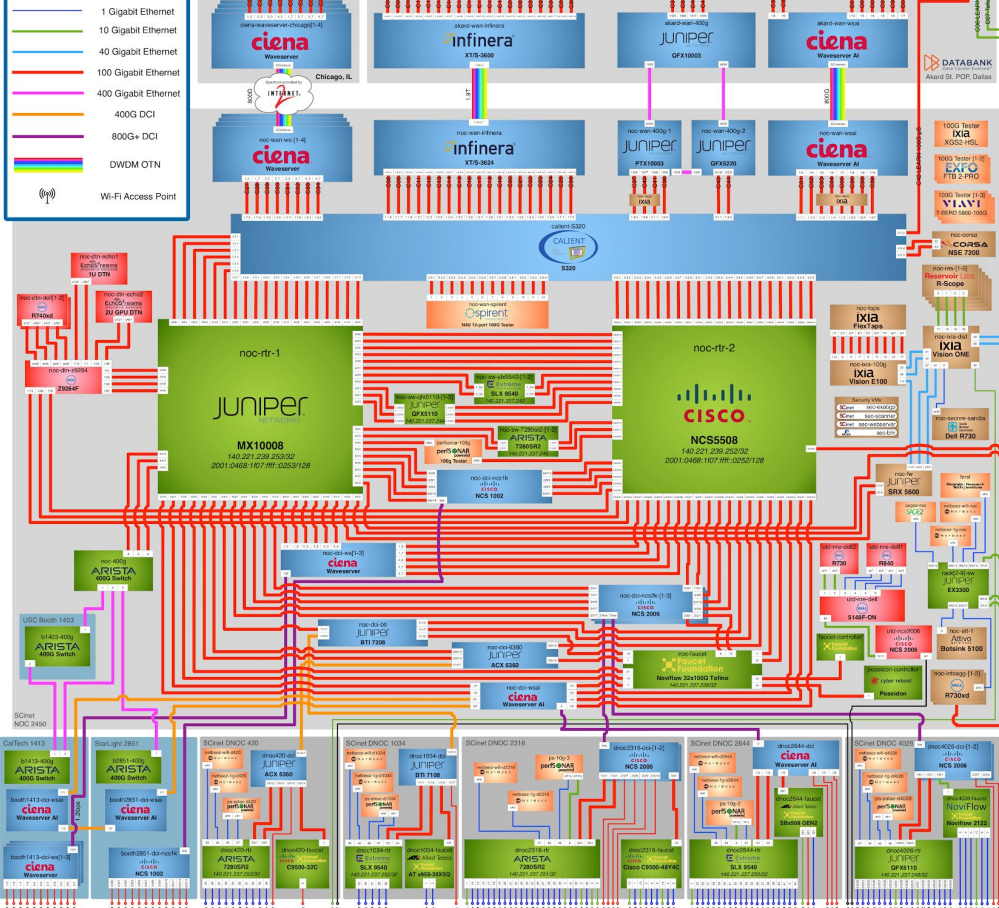
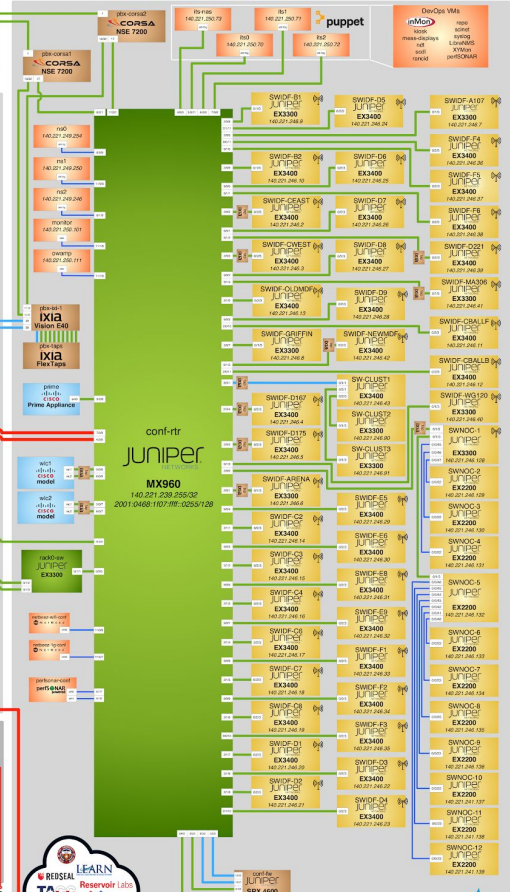
<https://redcables.wand.nz/>

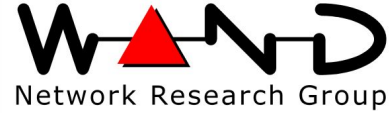


- 1 Gigabit Ethernet
- 10 Gigabit Ethernet
- 40 Gigabit Ethernet
- 100 Gigabit Ethernet
- 400 Gigabit Ethernet
- 400G DCI
- 800G DCI
- DWDM OTN
- Wi-Fi Access Point

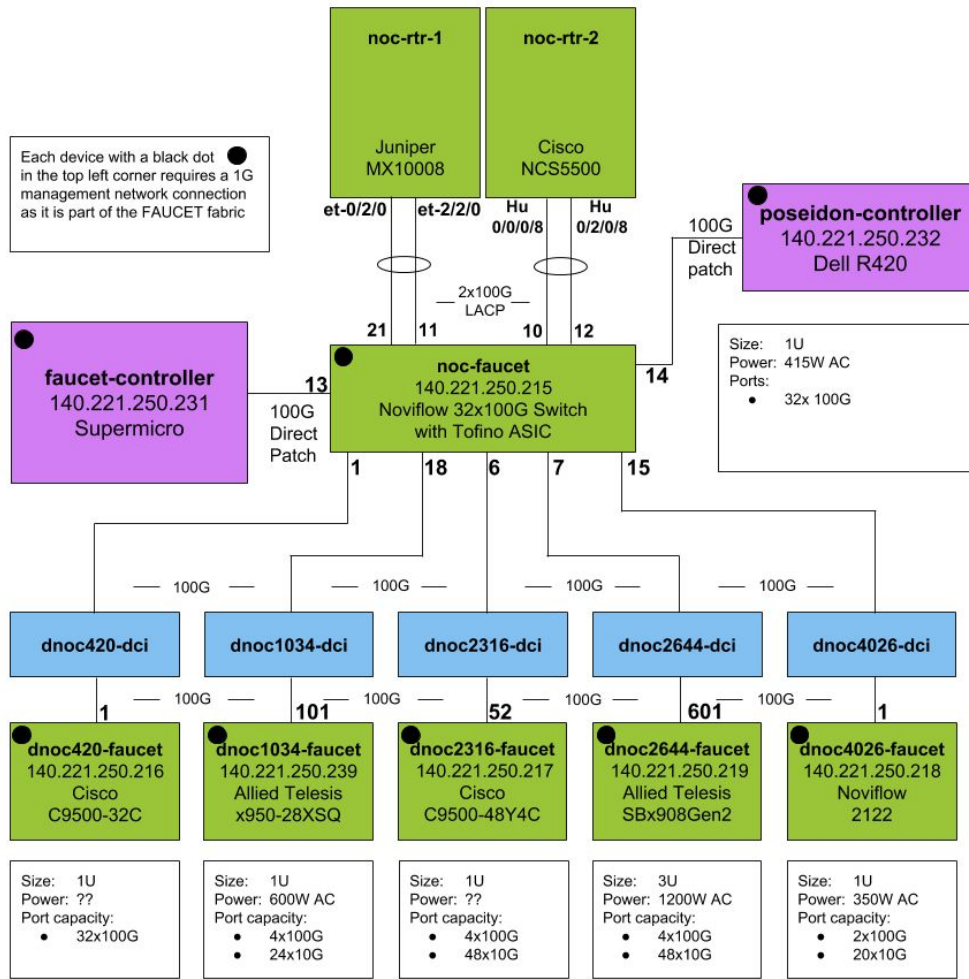


General Conference Support





Each device with a black dot in the top left corner requires a 1G management network connection as it is part of the FAUCET fabric



Staging and Testing



Show Setup



Complete NOC



Team



Faucet, Multivendor 100G SDN Made (fairly) Easy

Learn more <http://faucet.nz>

Follow us on Twitter [@faucetsdn](https://twitter.com/faucetsdn)

