

What Research Can You Do With the RIPE NCC?

Emile Aben
Research Engineer
RIPE NCC

Why Do Internet Measurement?



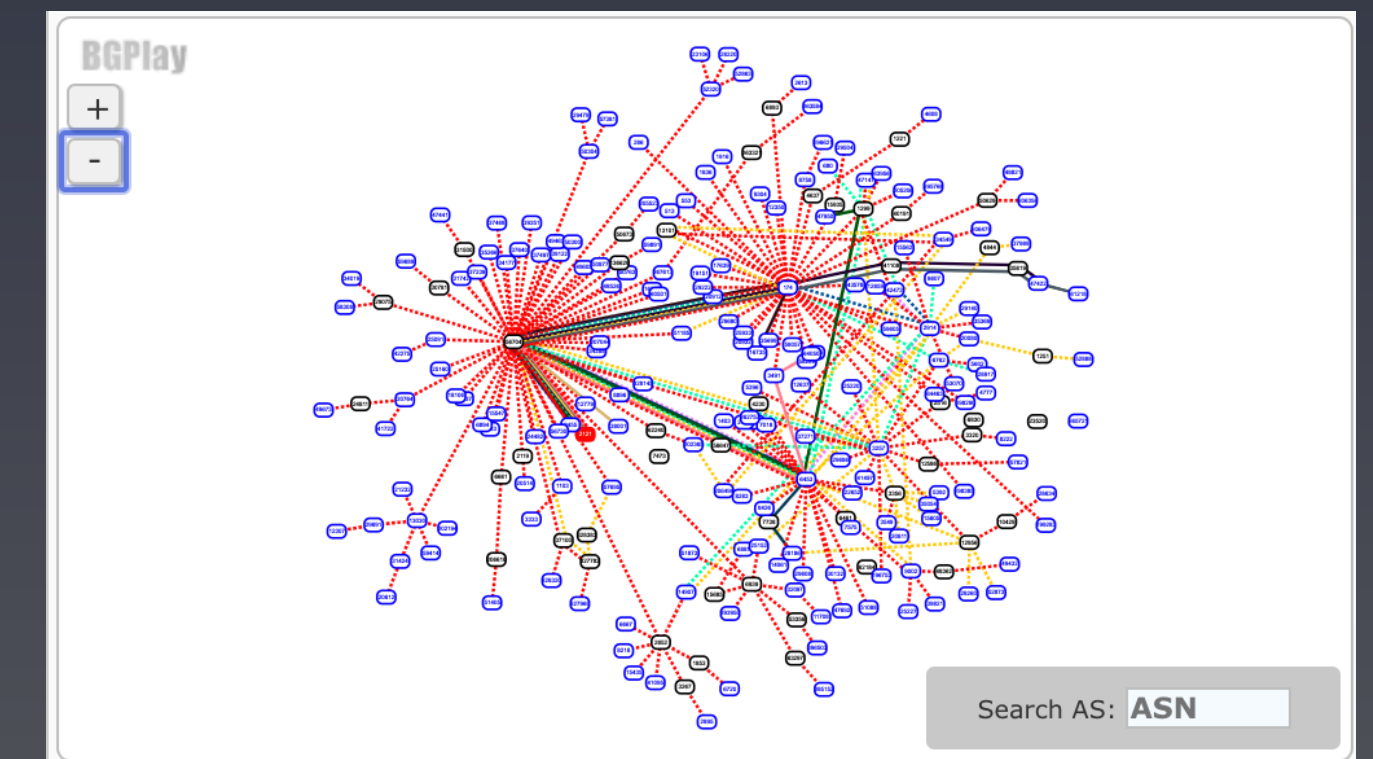
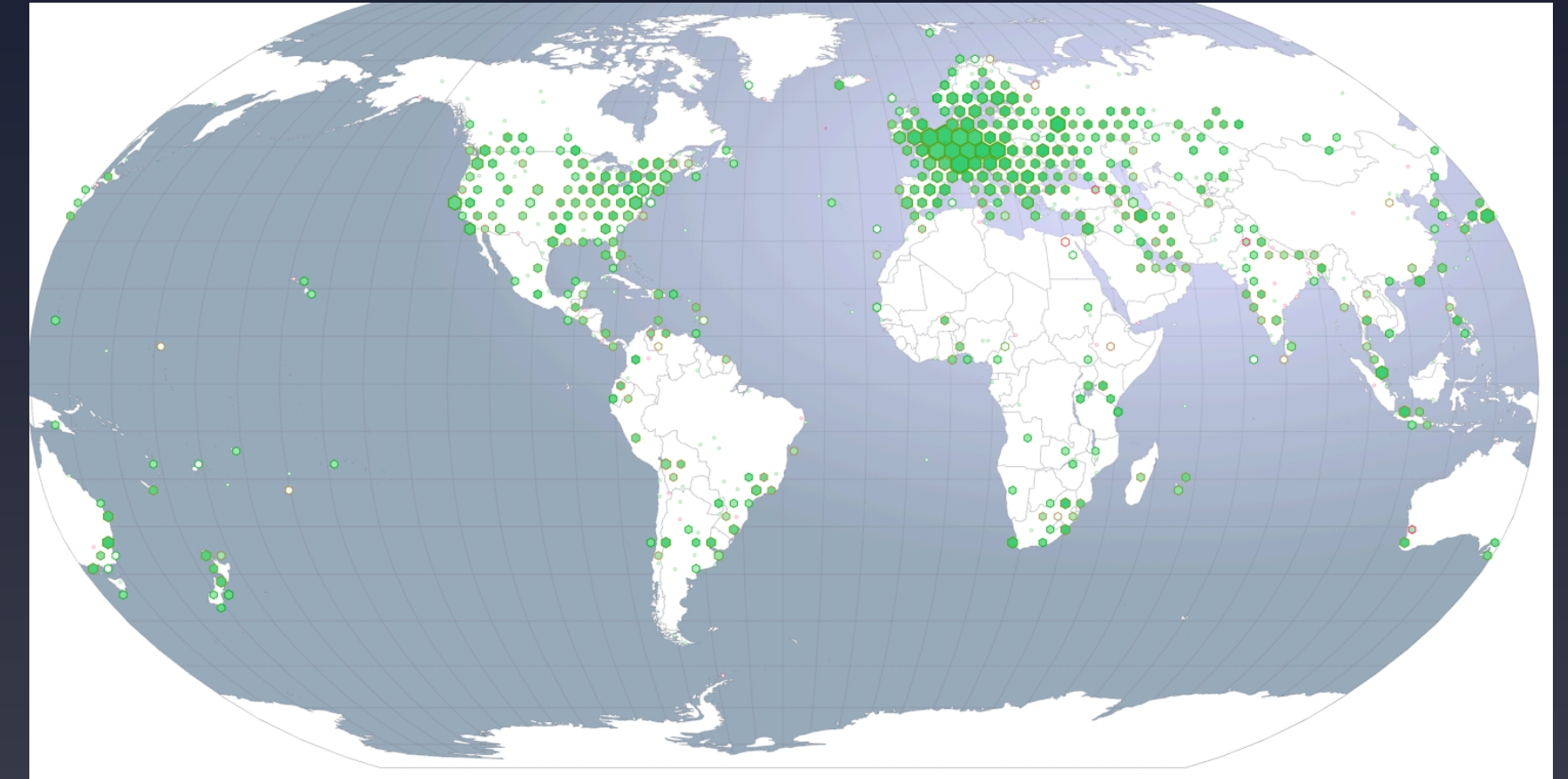
“To measure is to improve”



RIPE NCC Data Collection



- RIPE Atlas
 - Internet data plane: ping, traceroute, DNS, etc.
- RIPE RIS
 - Internet control plane
- For the good of the Internet!
- How do we make these systems better?



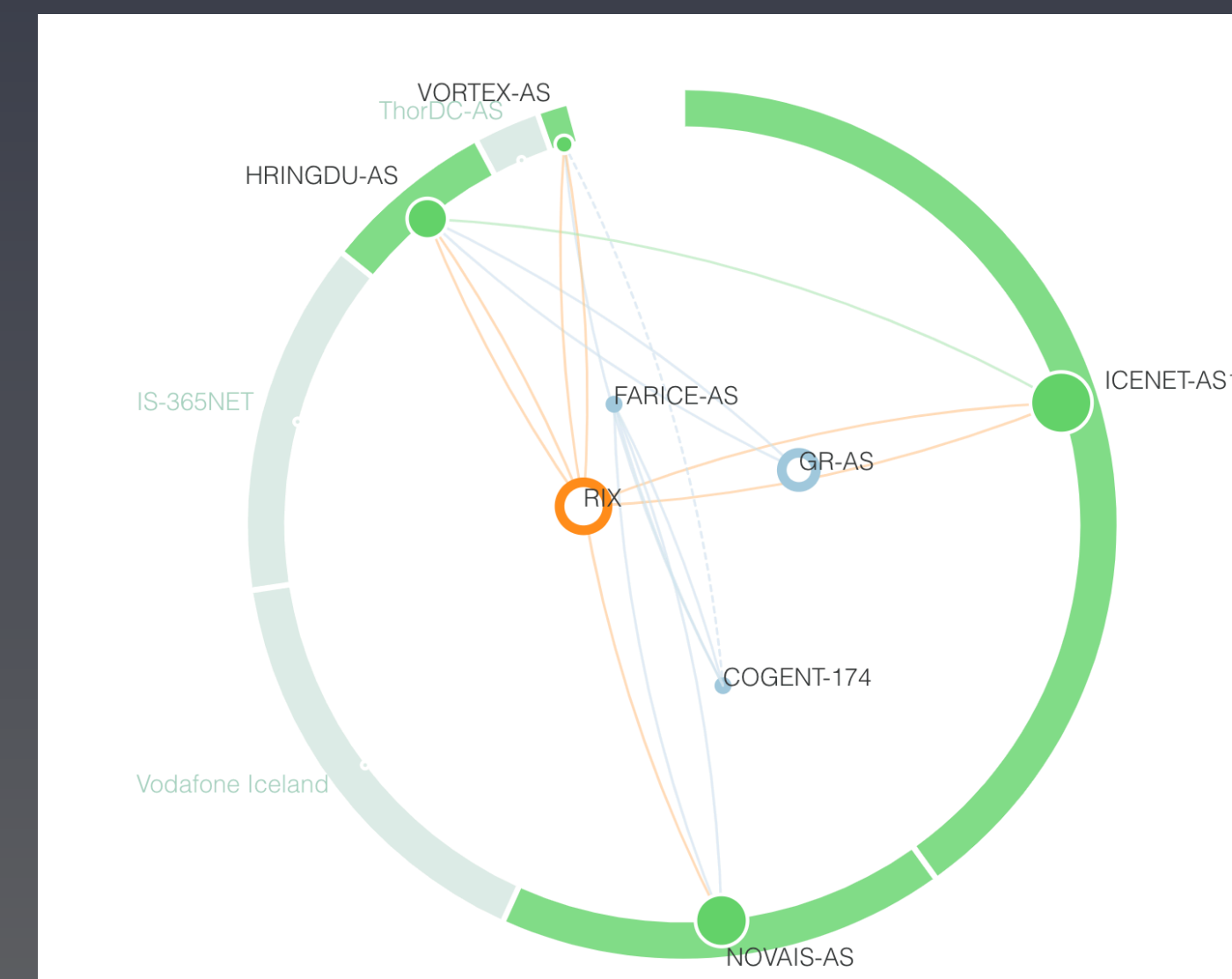
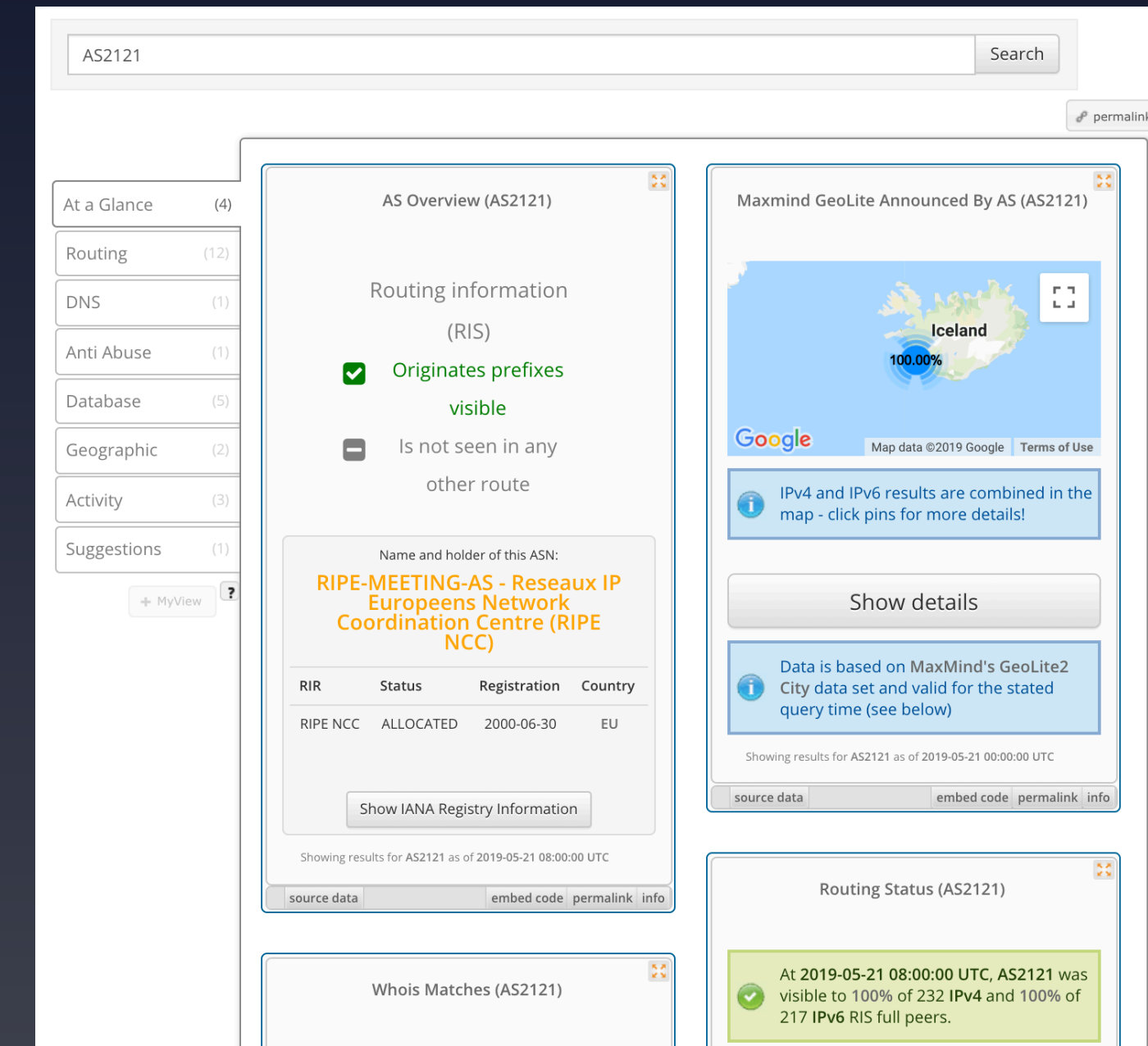
Data Interfaces



- RIPEstat
 - All you want to know about a prefix or ASN
 - <https://stat.ripe.net/>

- Prototypes
 - <https://www.ripe.net/ixp-country-jedi>

- Raw Data



Time To Insight



- Network Operator
 - Smart, but no time to dig deeper
- Network Researcher
 - Smart, and plenty of time
- And bringing them together!

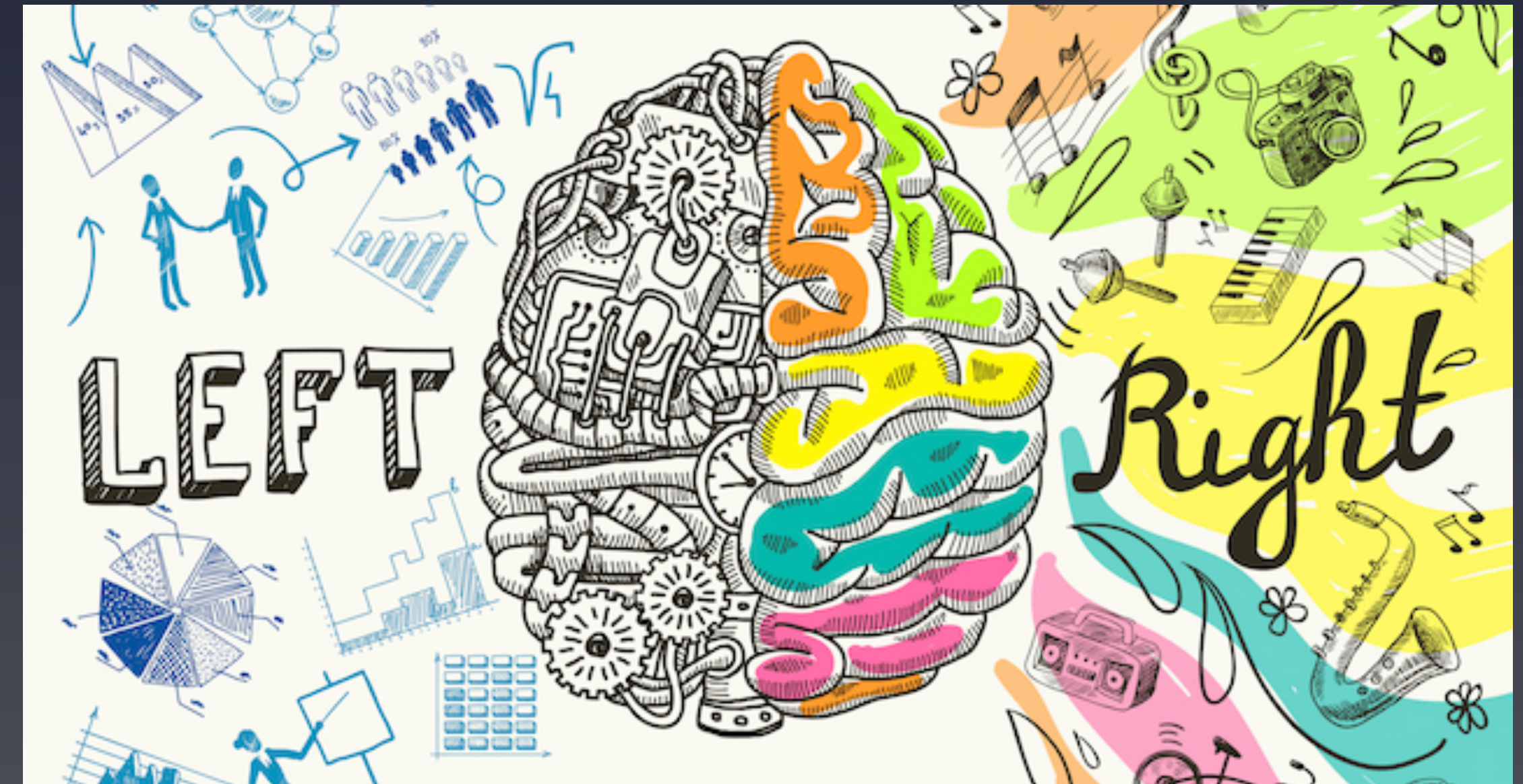


image credits: <http://thematrixmastermind.com/wp-content/uploads/2017/06/Brain-Dominance-Immune-System.jpeg>

How We Help Research



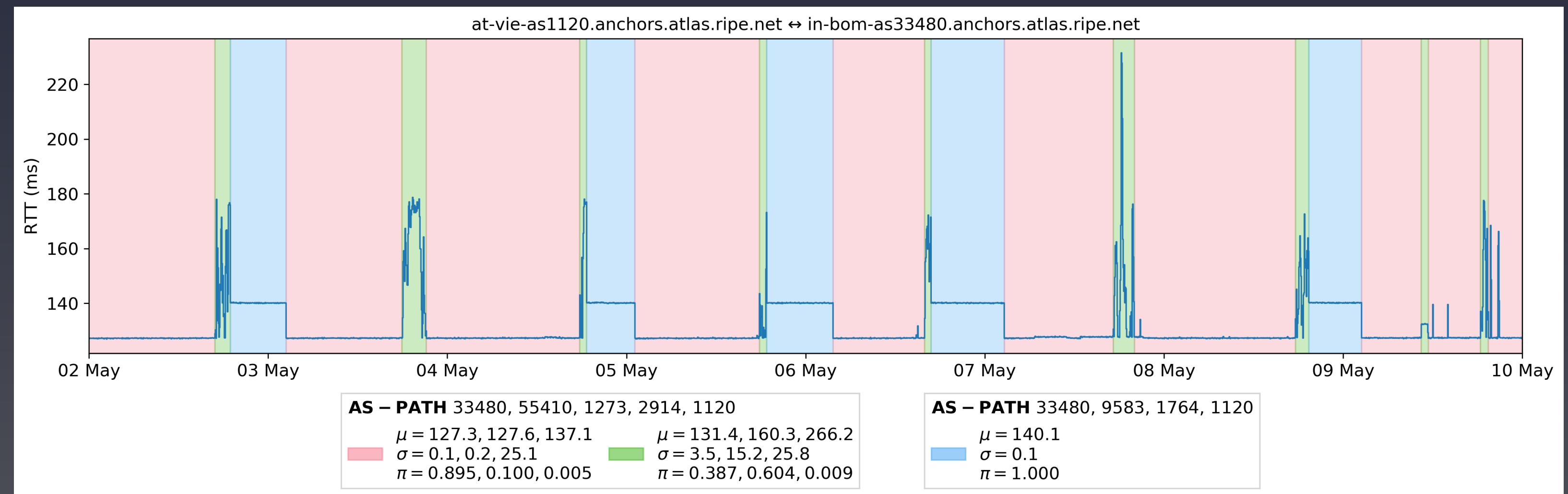
- In depth knowledge about data we collect
 - Learn how to reduce “time to insight” from our data

- Custom Analysis

- <https://labs.ripe.net>

- Collaborate!

- Internships https://labs.ripe.net/Members/maxime_mouchet/api-for-summarising-events-in-ripe-atlas-rtt-time-series
 - How can we make our data collection systems better?





Questions



emile.aben@ripe.net
@meileaben



not a typo